

**The Beeliar Group of Professors for
Environmental Responsibility**

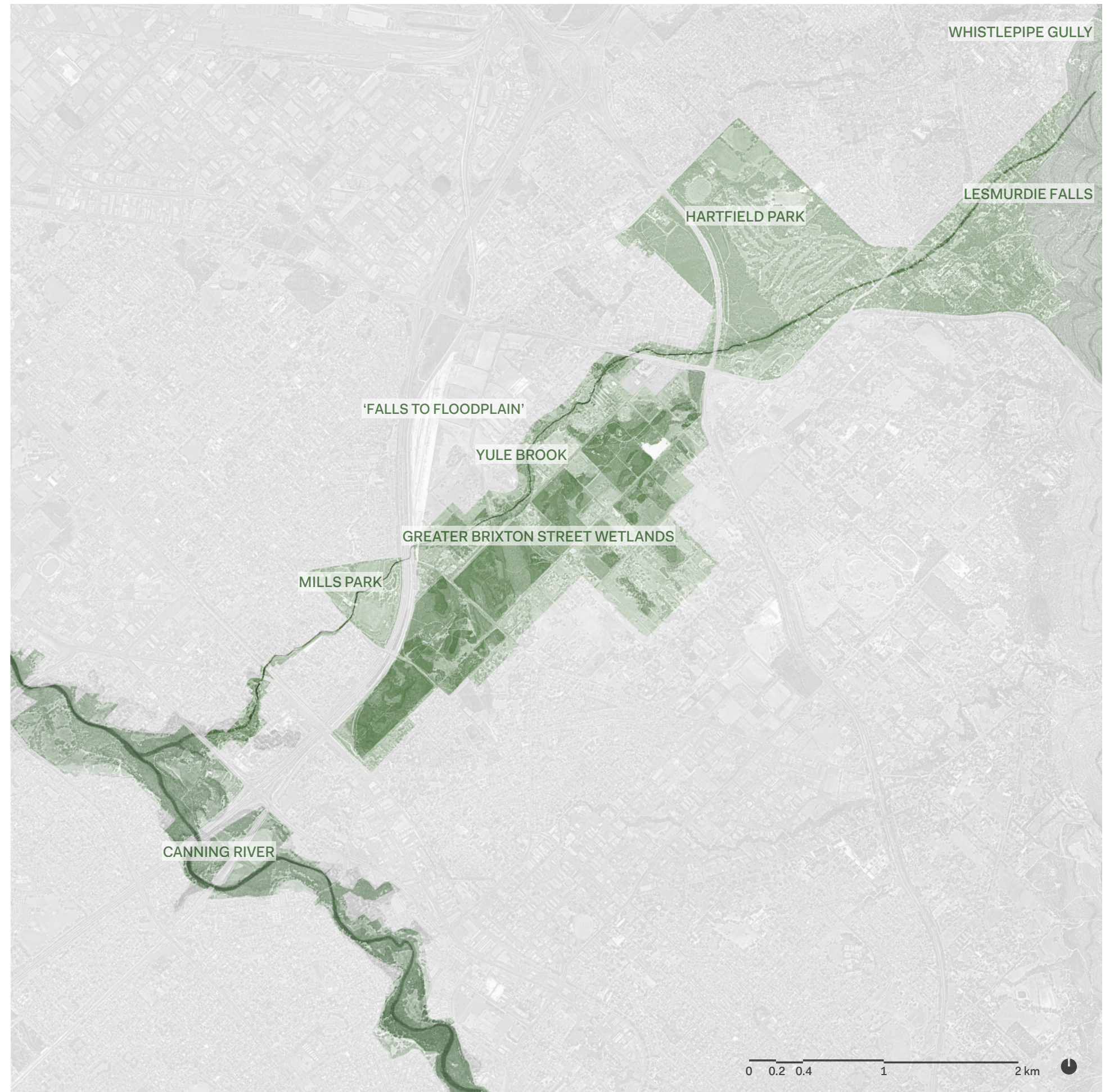
Vision for a future Yule Brook Regional Park

July 2023

In 2018, The Beeliar Group of Professors for Environmental Responsibility issued a vision for a future Yule Brook Regional Park.

This is a vision for conservation and public enjoyment, connecting 'Falls to Floodplain' from Lesmurdie Falls to the Canning River through the Greater Brixton Street Wetlands, one of the most biodiverse landscapes in Australia.

Right: The Beeliar Group's vision for a future Yule Brook Regional Park.



It is also under threat from future industrial development.

The MKSEA industrial rezoning encircles and strangles the megadiverse corridor to a 400-metre width. This rezoning is currently being considered by the City of Gosnells, the EPA and DPLH.

Right: Proposed industrial rezonings surrounding the Greater Brixton Street Wetlands and covering the Yule Brook.



The proposed Yule Brook Regional Park contains half of the floral species present in Greater Perth, in only 1% of the area.

This is megadiverse 15-kilometre corridor is home to close to 900 native plant species and 11 federally-listed threatened ecological communities.



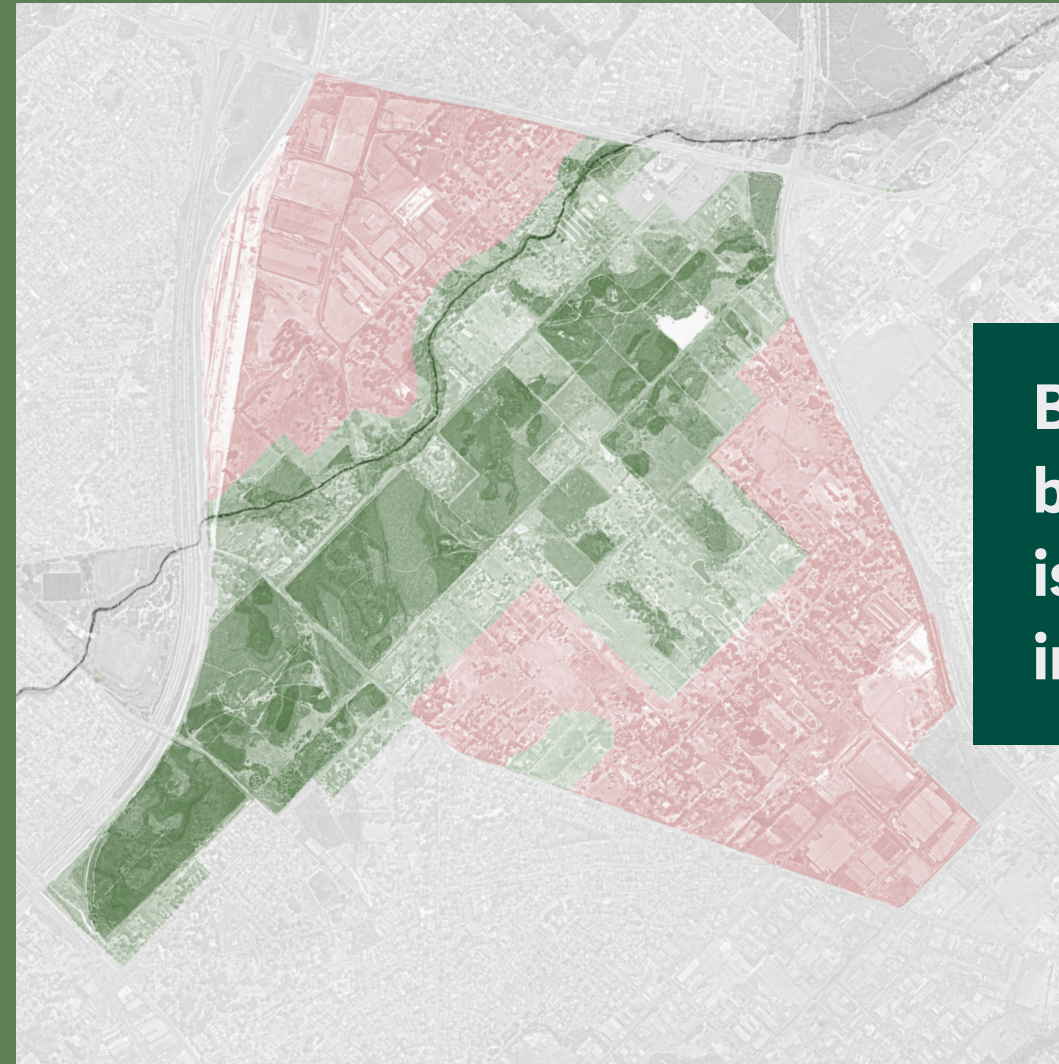
Right: Glimpses of this rich environment, from Hans Lambers (ed) *A Jewel in the Crown of a Global Biodiversity Hotspot 2019*.



The Beeliar Group have determined that rezoning in its current form cannot go ahead without the strong likelihood of extreme environmental impacts upon biodiversity, hydrology and landscape connectivity.

Left: The 'Hydroplain' area of pervious landscape across Greater Brixton groundwater flownet.

Right: The sequence of floristic communities and broader connections.



Broad and connected buffers must be specified to ensure this landscape is protected. Buffers will limit the industrial area by just 27%.

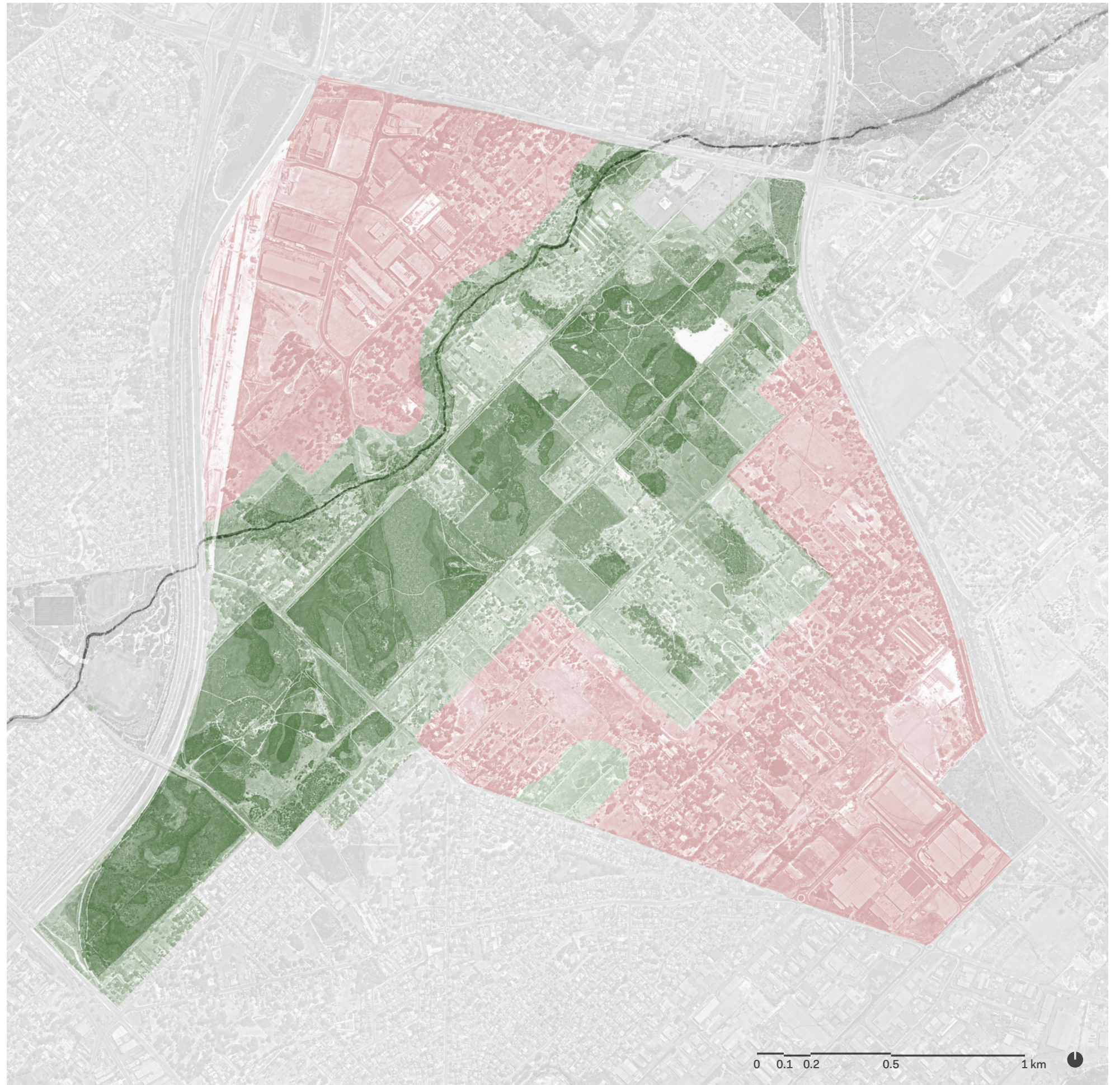
Left: City of Gosnells' Draft Structure Plan for MKSEA.

Right: The Beeliar Group's vision for a coexistence between industry and a future Regional Park.

The EPA should direct the City of Gosnells to implement 100 metre buffers around all Conservation Category Wetlands, Threatened Ecological Communities and the Yule Brook riparian zone, a move that will limit the industrial area by just 27%. Within the industrial zone, conditions should specify a transition from light industrial land uses at the Regional Park edge and specify WSUD mechanisms for future development.

The careful planning of this area can protect this trove of biodiversity for future generations.

Right: The Beeliar Group's vision for a coexistence between industry and a future Regional Park.



The Beeliar Group is a multidisciplinary group of professors, dedicated to furthering the principles and practices that protect, sustain and nourish the environment. The Group covers a wide range of areas bearing on environmental responsibility.

Members: Emeritus Professor Bruce Armstrong, Emeritus Professor John Bailey, Associate Professor Alison Bartlett, Emeritus Professor Allan Barton, Associate Professor Roberta Bencini, Emeritus Professor Don Bradshaw, Dr Danielle Brady, Associate Professor Michael Calver, Dr Jane Chambers, Professor Carey Curtis, Professor Jenny Davis, Professor Kingsley Dixon, Associate Professor Katy Evans, Dr Hugh Finn, Professor Andrea Gaynor, Dr Sajni Gudka, Emeritus Professor Patricia Harris, Professor Richard Hobbs, Professor Pierre Horwitz, Dr Megan Jaceglav, Emeritus Professor Philip Jennings, Emeritus Professor Roy Jones, Professor Jeffrey Kenworthy, Professor Hans Lambers, Professor Carmen Lawrence, Professor Colin Macleod, Professor Dora Marinova, Professor Peter Newman, Professor Baden Offord, Associate Professor Alison Reid, Associate Professor Megan Ryan, Associate Professor Stella Tarrant, Emeritus Professor Bev Thiele, Associate Professor Carol Warren and Dr David Whish-Wilson. Mapping in collaboration with Daniel Jan Martin.